



Universität des Saarlandes
Angewandte Sprachwissenschaft sowie
Übersetzen und Dolmetschen

Unit 10

Post-Imperial Britain

Social Darwinism vs Socialism in 20th century Britain

Introduction to Culture Studies (UK & Ireland)

20.vii.2017

Robert Spence

CS

20th century British icon Margaret Thatcher



Figure: Margaret Thatcher (Prime Minister 1979–1990)

- Development of Base

- Development of Base
 - Development of Productive Forces
 - mid-century: Britain overtaken by U.S. as global superpower
 - 1945-1975: Britain's economy ailing (see handout)
 - 1970s: inflation → 1980s: Thatcherism

- Development of Base
 - Development of Productive Relations
 - existing class structure damaged by WW I
 - post-industrial society from 1990s
 - Development of Productive Forces
 - mid-century: Britain overtaken by U.S. as global superpower
 - 1945-1975: Britain's economy ailing (see handout)
 - 1970s: inflation → 1980s: Thatcherism

- Development of Superstructure

- Development of Base
 - Development of Productive Relations
 - existing class structure damaged by WW I
 - post-industrial society from 1990s
 - Development of Productive Forces
 - mid-century: Britain overtaken by U.S. as global superpower
 - 1945-1975: Britain's economy ailing (see handout)
 - 1970s: inflation → 1980s: Thatcherism

- Development of Superstructure
 - Development of State Institutions
- Development of Base
 - Development of Productive Relations
 - existing class structure damaged by WW I
 - post-industrial society from 1990s
 - Development of Productive Forces
 - mid-century: Britain overtaken by U.S. as global superpower
 - 1945-1975: Britain's economy ailing (see handout)
 - 1970s: inflation → 1980s: Thatcherism

- Development of Superstructure
 - Development of State Institutions
 - limitations on powers of House of Lords
 - extension of voting rights
 - dismantling of Empire (e.g. Irish Independence)
 - construction of welfare state from 1946
- Development of Base
 - Development of Productive Relations
 - existing class structure damaged by WW I
 - post-industrial society from 1990s
 - Development of Productive Forces
 - mid-century: Britain overtaken by U.S. as global superpower
 - 1945-1975: Britain's economy ailing (see handout)
 - 1970s: inflation → 1980s: Thatcherism

- Development of Superstructure
 - Development of Ideology
 - Development of State Institutions
 - limitations on powers of House of Lords
 - extension of voting rights
 - dismantling of Empire (e.g. Irish Independence)
 - construction of welfare state from 1946
- Development of Base
 - Development of Productive Relations
 - existing class structure damaged by WW I
 - post-industrial society from 1990s
 - Development of Productive Forces
 - mid-century: Britain overtaken by U.S. as global superpower
 - 1945-1975: Britain's economy ailing (see handout)
 - 1970s: inflation → 1980s: Thatcherism

- Development of Superstructure
 - Development of Ideology
 - 1920s (literature, science)
 - 1960s (pop culture)
 - Development of State Institutions
 - limitations on powers of House of Lords
 - extension of voting rights
 - dismantling of Empire (e.g. Irish Independence)
 - construction of welfare state from 1946
- Development of Base
 - Development of Productive Relations
 - existing class structure damaged by WW I
 - post-industrial society from 1990s
 - Development of Productive Forces
 - mid-century: Britain overtaken by U.S. as global superpower
 - 1945-1975: Britain's economy ailing (see handout)
 - 1970s: inflation → 1980s: Thatcherism



Figure: Professor Albert Bartlett (1923–2013) (Image: YouTube)

Expectation of growth

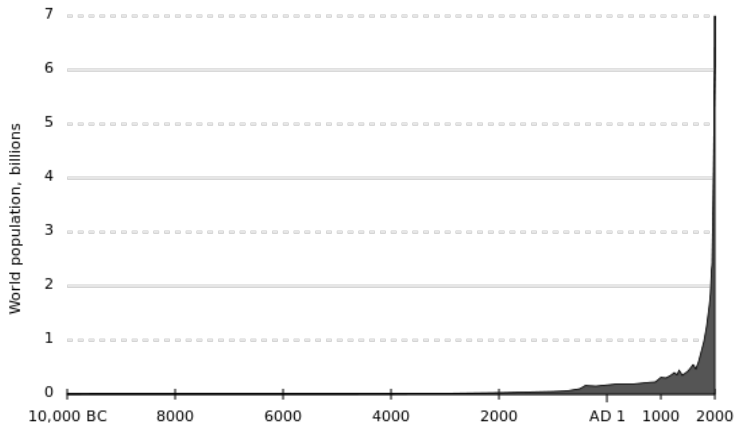


Figure: Population growth (Source: Wikipedia)



Figure: Thomas Malthus (1766–1834)

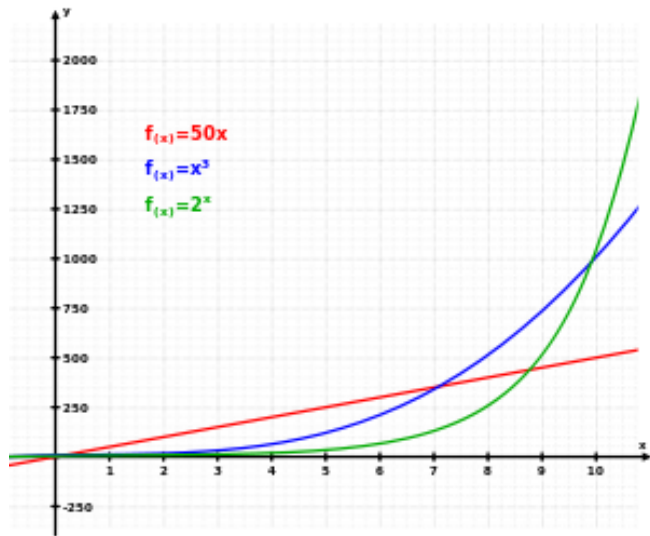


Figure: Exponential Growth

The Oxford Debate (1860)

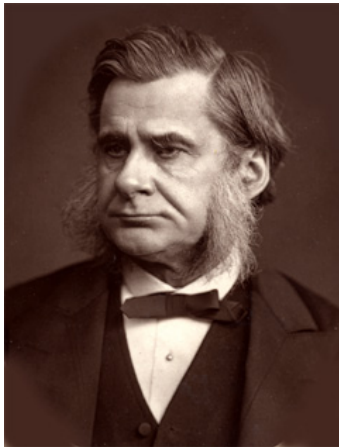


Figure: Samuel Wilberforce vs. T. H. Huxley

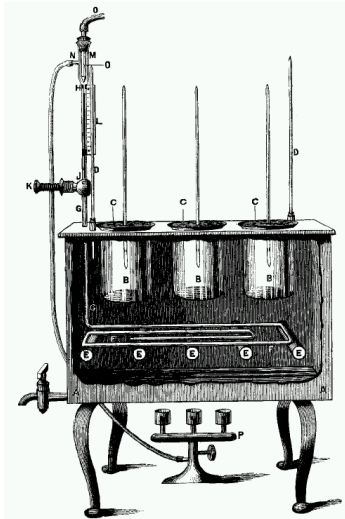


Figure: Rev. William Dallinger's Experiment



Figure: King Edward VII



Figure: The People's Budget (1909)



Figure: The Great War (scene from Stanley Kubrick's film "Paths of Glory")



Figure: King George V

Partition of Ireland, 1921



Figure: The Six Counties (out of 9 in the province of Ulster) that remained in the U.K. after 1921)



Figure: A film that captures the Twenties perfectly

General Strike (1926)



Figure: The end of the General Strike

Who is this man?



Figure: Oswald Mosley



Figure: Neville Chamberlain and Joachim von Ribbentrop,



Figure: Sir Winston Churchill



Figure: Battle of Britain (1940)



Figure: 1948

The Coronation (1952)



Figure: Queen Elizabeth II, by Cecil Beaton

Who is this man?



Figure: This guy was bigger than Elvis

Who is this woman?



Figure: An icon of the Swinging Sixties

Imported Costs

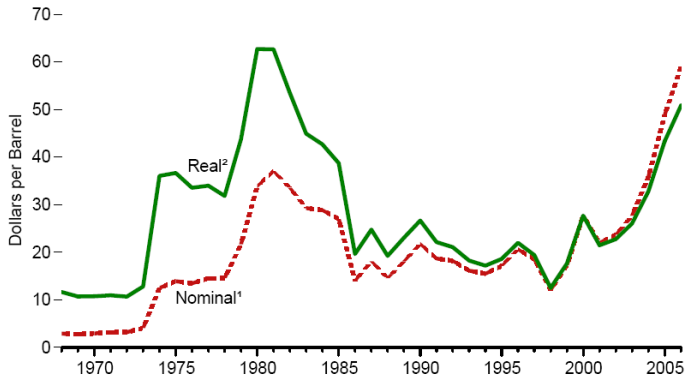


Figure: The Oil Crisis (1973; 1979)

Margaret Thatcher, the Milk Snatcher



Figure: Margaret Thatcher (Prime Minister 1979–1990)

John Maynard Keynes vs. Friedrich Hayek

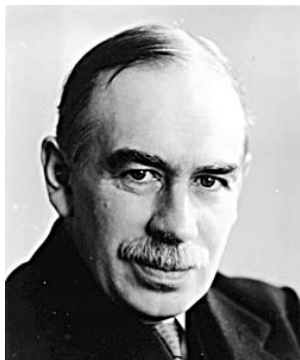


Figure: John Maynard Keynes and Friedrich Hayek



Figure: Milton Friedman



Figure: Ayn Rand

What did this woman want?



Figure: Margaret Thatcher with David Cameron



Figure: The Falklands War